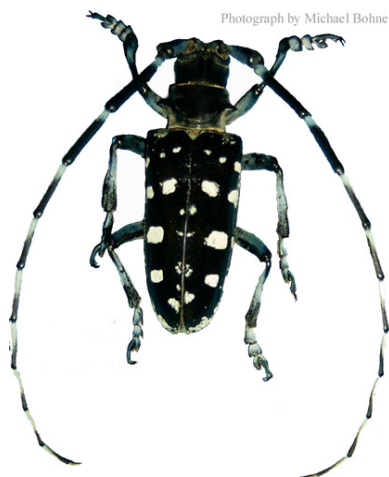




Asian Longhorned Beetle



Photograph by Michael Bohne

The adult male Asian Longhorned Beetle (Photo courtesy of University of Vermont)

In 1995, the Asian Longhorned Beetle arrived in the greater New York City and Chicago areas aboard wooden crating material from ships delivering goods from China. The Asian longhorned beetle is an exotic pest that threatens a wide variety of hardwood trees. Since its arrival, it has caused the demise of more than 7,000 trees in the greater-New York area alone.

What it Looks Like

Adult beetles are large (0.75 - 1.50 inches long) with very long black and white banded antennae. The body is glossy black with irregular white spots.

Projected Damage

If the infestation is not brought under control, this tree-boring insect may threaten no less than the economic viability of several forest product industries as well as the scenic quality and ecological character of entire landscapes across the North America. Economists estimate \$138 billion in damage to the U.S. economy if the beetle spreads nationwide.

The Problem

The larvae of the Asian longhorned beetle over-winter deep inside the heartwood of trees with sweet sap and grow up to 2 inches long. As they work their way out of the tree, they chew tunnels in the xylem and phloem that girdle stems and branches, eventually weakening and killing the tree. After emerging, the beetle may fly as far as a half a mile to mate or lay eggs in other trees.

The insect prefers maple species (*Acer* spp.), including box elder, Norway, red, silver, sugar and sycamore maples. But trees such as horsechestnut, birch, apple, cherry, pear, poplar, chinaberry, willow, elm, mulberry, locust, green ash, London planetree, and Rose of Sharon have also been infested

In China, the Asian longhorn beetle prefers areas from 21 to 43 degrees North latitude and 100 to 127 degrees East longitude. Translated in North American terms, the beetle could survive from Cancun, Mexico to Milwaukee, Wisconsin.

Find out more:

The University of Vermont has an excellent Web site that includes many useful links.

Visit <http://www.uvm.edu/albeetle/index.html>

The accidental importation of the Asian longhorned beetle exemplifies a worst-case scenario of what can happen when species from one place are introduced in far-flung habitats. It doesn't take long to imagine the devastating impact of the spread of the beetle to places like upstate New York and New England where the maple sugar industry, fall foliage tourism, and forestry are mainstays of the economy. Walk down any urban or suburban street or drive down any rural road in the better part of the country and you can quickly surmise how ruinous the loss of mature shade trees would be.

Control Measures

The 1-1/2 inch beetle has no known controls to stop it-- *no effective chemical treatments, no biological predators*—nothing short of cutting down, shredding, and burning the entire infested tree has been effective...and even that has not prevented its gradual spread to new terrain.

Stopping the Damage

City, state, and federal agencies are working together to stop the spread of the Asian Longhorned Beetle. Nothing short of eradication is needed to achieve control of the Asian longhorned beetle. To prevent further spread of the insect, quarantines have been established to avoid transporting infested trees and branches, and China is using alternative packing material and fumigating wooden shipping crates. Still, the total destruction of thousands of large shade trees has been the only real hope to date of stopping the beetle. This severe control method will continue as additional infested trees are identified.

e-Source

Visit our online information center for fact sheets on a variety of environmental topics:

www.auduboninternational.org/e-source

Audubon International
46 Rarick Road
Selkirk, NY 12158
(518) 767-9051